

Enjoy up to 30% Bandwidth Savings on Satellite Implementations

Hughes JUPITER System Features ACM on TDMA Return Channels

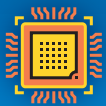
For years, satellite operators have enjoyed significant efficiencies through the implementation of Adaptive Coding and Modulation (ACM) on the DVB-S2X forward channel. Now, with ACM on the Time Division Multiple Access (TDMA) return channel built into the JUPITER™ System, operators can realize similar efficiencies – up to 30% bandwidth savings, in some cases – with JUPITER-driven implementations.



ACM on TDMA Return Channel – *just like DVB-S2X for the outroute*

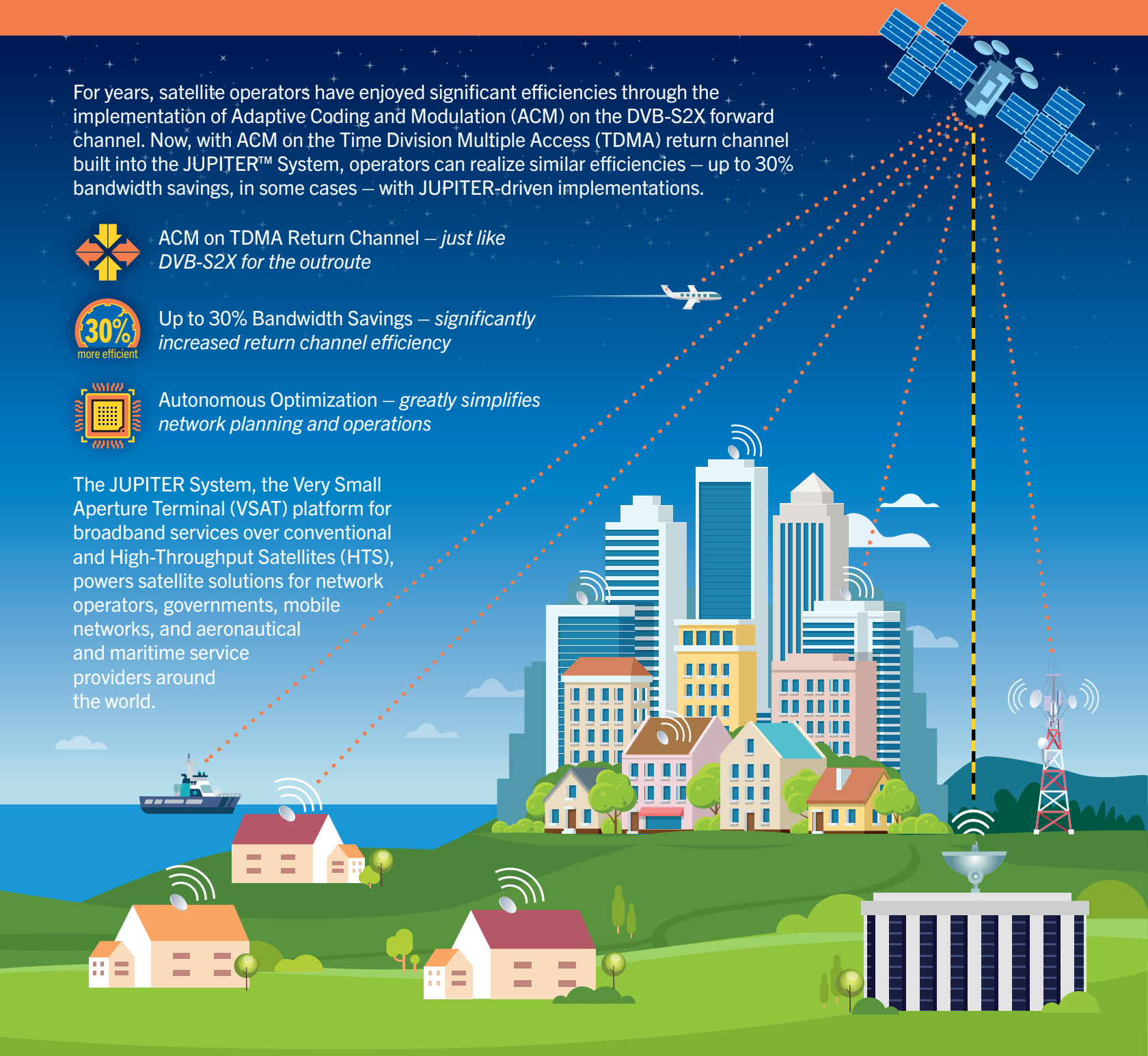


Up to 30% Bandwidth Savings – *significantly increased return channel efficiency*



Autonomous Optimization – *greatly simplifies network planning and operations*

The JUPITER System, the Very Small Aperture Terminal (VSAT) platform for broadband services over conventional and High-Throughput Satellites (HTS), powers satellite solutions for network operators, governments, mobile networks, and aeronautical and maritime service providers around the world.



HUGHES
An EchoStar Company

JUPITER
SYSTEM