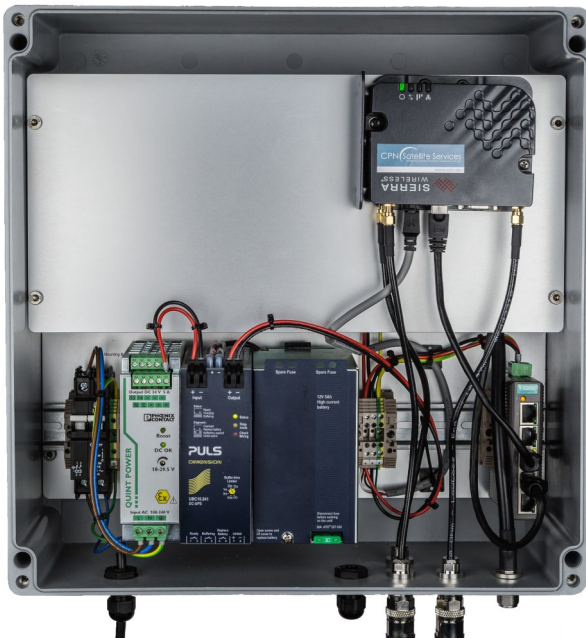


# CPN Enclosure M2M Dual Mode LTE Battery Backup

All in one, ready to install, IoT dual mode Satellite and LTE solution based on Hughes 9502 M2M with Battery Backup

## CPN Enclosure M2M Dual Mode LTE Battery Backup



AirLink® layer mounted

The **CPN Enclosure M2M Dual Mode LTE Battery Backup** includes a Hughes 9502 two piece terminal that provides reliable IP connectivity over the Inmarsat Broadband Global Area Network (BGAN) and the industrial grade LTE gateway AirLink® Raven RV50. The AirLink® Raven RV50 is the industry's lowest power LTE gateway.

The **CPN Enclosure M2M Dual Mode LTE Battery Backup** integrates all necessary passive components to feed an internal mounted Hughes 9502 satellite modem and the LTE gateway with the required power. The Dual-Mode operation delivers failover capabilities with automatic switching between cellular networks and the BGAN service. All components are installed inside the CPN Enclosure to be protected against harsh weather conditions.

The system also includes in addition an industrial power supply and a powerful Battery Backup to protect the system against external power failures. The transmission of Data will be ensured for a limited time, even when the external power source is interrupted at the unmanned site.

The **CPN Enclosure M2M Dual Mode LTE Battery Backup** is a **ready to install solution** to connect the BGAN Terminal with the external sensors or devices via installed RTU (customer specific!) for machine-to-machine (**M2M**) and **IoT** applications such as:

- Border Control
- Suite surveillance
- Security Monitoring of remote locations
- Mining, Oil and gas
- pipeline monitoring/control

The **CPN Enclosure M2M Dual Mode LTE Battery Backup** is a cost-effective, always-on, real-time, high-speed M2M terminal which contains:

- Double circuit Breaker
- Phoenix 120 Watt AC/DC industrial power supply (QUINT-PS/1AC/24DC/5/CO)
- PULS uninterruptible power supply (UPS) (PULS UBC 10.241)
- Moxa unmanaged switch (EDS-205)
- AirLink® Raven RV50 LTE gateway
- IP 66 protected for installations in harsh environments
- Easy to install

Optional:

- **Dual Loop High Gain Antenna** (gain 10dBI) for LTE Operation, 698-960 and 1710-2700 MHz
- RTU

TÜV/CB report optional



AirLink® layer not mounted

## Specifications

Weight:	11 kg (without satellite terminal)
Dimensions:	40.8 x 43.2 x 16.0 cm 16.06 x 17.00 x 6,29 inches

## Power

Input Voltage:	120/230 V AC
----------------	--------------

## Environmental conditions

Dust and Water:	IP-67 protection class
Temperature:	-10°C to +50°C charge +14°F to +122°F charge -10°C to +60°C discharge +14°F to + 140°F discharge

## Interfaces

5 x 10/100 RJ45 port:	non PoE
-----------------------	---------

# About CPN Satellite Service GmbH

## Your qualified partner for satellite based solutions

CPN Satellite Service GmbH is specialized in innovative solutions for mobile satellite communication since 1989. We stand out due to our comprehensive and service oriented offer of services. Our clientele are well known national and international companies, MoD/Government, first aid organizations and media companies.

We are one of the pioneers in the market. Our company philosophy is focused on the individual demands of our customers. We offer consultation, realization of projects and trainings as well as first class After Sales Support.

### CPN Satellite Services

- Professional applications
- Independent of branch and location
- Customer oriented hard- and software solutions
- Secure communication worldwide
- Phone, Fax, E-Mail, Internet
- Videoconference and streaming
- Consulting service, training and support
- Installation and maintenance

### Range of application

- Condition Monitoring
- SCADA (Supervisory Control and Data Acquisition)
- M2M
- Remote Office
- News gathering
- Backup-/Emergency communication
- Fleet management/Tracking



CPN Satellite Services GmbH  
Adalbert-Stifter-Straße 15  
65375 Oestrich-Winkel  
Germany

phone: +49 (0) 6723 91 348 - 0  
fax: +49 (0) 6723 91 348 - 69  
email: info@cpn.de  
internet: www.cpn.de