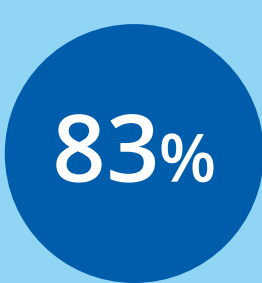
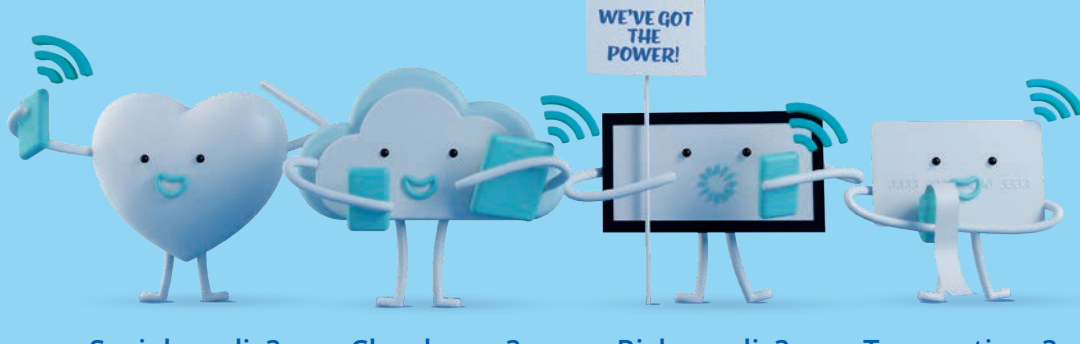


# BATTLE OF THE BANDWIDTH

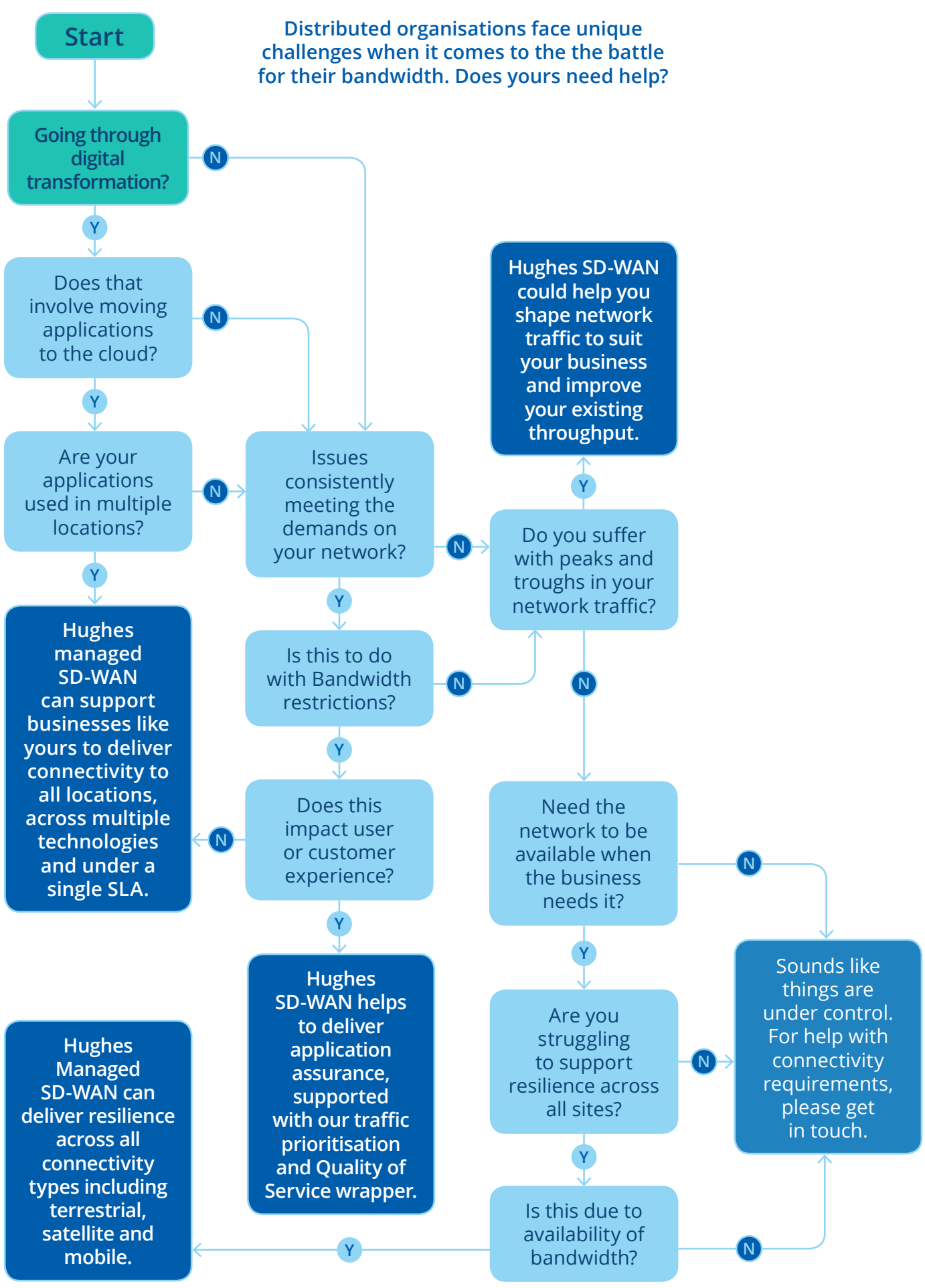


## WHAT WILL WIN YOUR NETWORK'S BATTLE OF THE BANDWIDTH?



Amount of enterprise workloads that will be in the cloud by 2020.<sup>2</sup>

## DOES YOUR NETWORK NEED WORK?

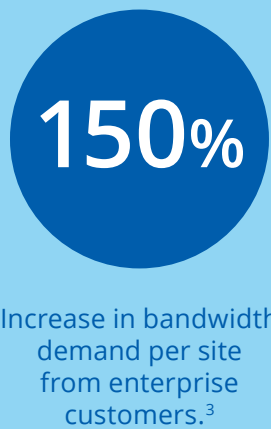


## SAY HELLO TO HUGHES MANAGED SD-WAN.

Wouldn't it be nice if your network could be monitored and managed from one central location?

Now it can:

- Single service level agreement across sites and borders.
- Improved application availability.
- Inbuilt security protocols remove the risk of data-in-transit.
- Prioritise mission critical applications.
- Eliminate outages.
- Deliver a better customer experience.



## WHY TRUST HUGHES?

When you select Hughes to provide your connectivity you can be assured of a world-class service for your business.

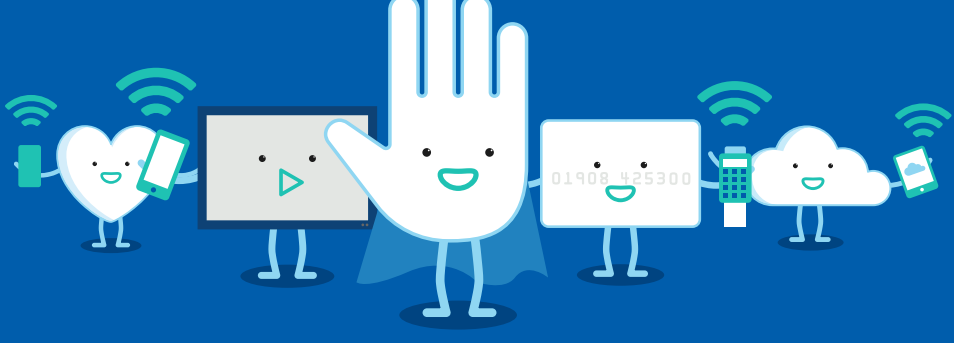
We manage one of the largest networks in Europe – our largest single SD-WAN customer has over 3,500 locations – and we're trusted to power the digital transactions and interactions of some of the largest brands and distributed enterprises in the world. We have also deployed and managed over 33,000 SD-WAN sites in 18 countries, enabling more companies to work more efficiently and safely.

We're experts at providing cost-effective, agile and responsive solutions that fully meet your commercial needs and ensure your customers will never be left WANTing more.

**Hughes. The art of crafting network solutions.**

**3,500**

The locations of our largest SD-WAN customer.



**33k+**

Amount of SD-WAN sites deployed by Hughes.

HughesOn Managed SD-WAN, named 2018 SD-WAN product of the year.

**18**

Number of countries where Hughes has deployed SD-WAN solutions.

**5bn+**

Transactions that Hughes supports every year.

1. Source: IDC Technology Spotlight Jan 18  
2. Source: Forbes  
3. Source: Hughes customer data analysis  
4. Source: Hughes' three month study of 1,900+ enterprise sites.